

**FOX CANYON GMA BASIN MANAGEMENT OBJECTIVES REPORT CARD
LAS POSAS BASINS
Updated January 2011**

Goal: Maintain chloride and TDS concentrations suitable for irrigation of salt-sensitive crops, particularly avocados and berries. BMOs for SLP are equal to the concentrations observed in surface water in Arroyo Las Posas.

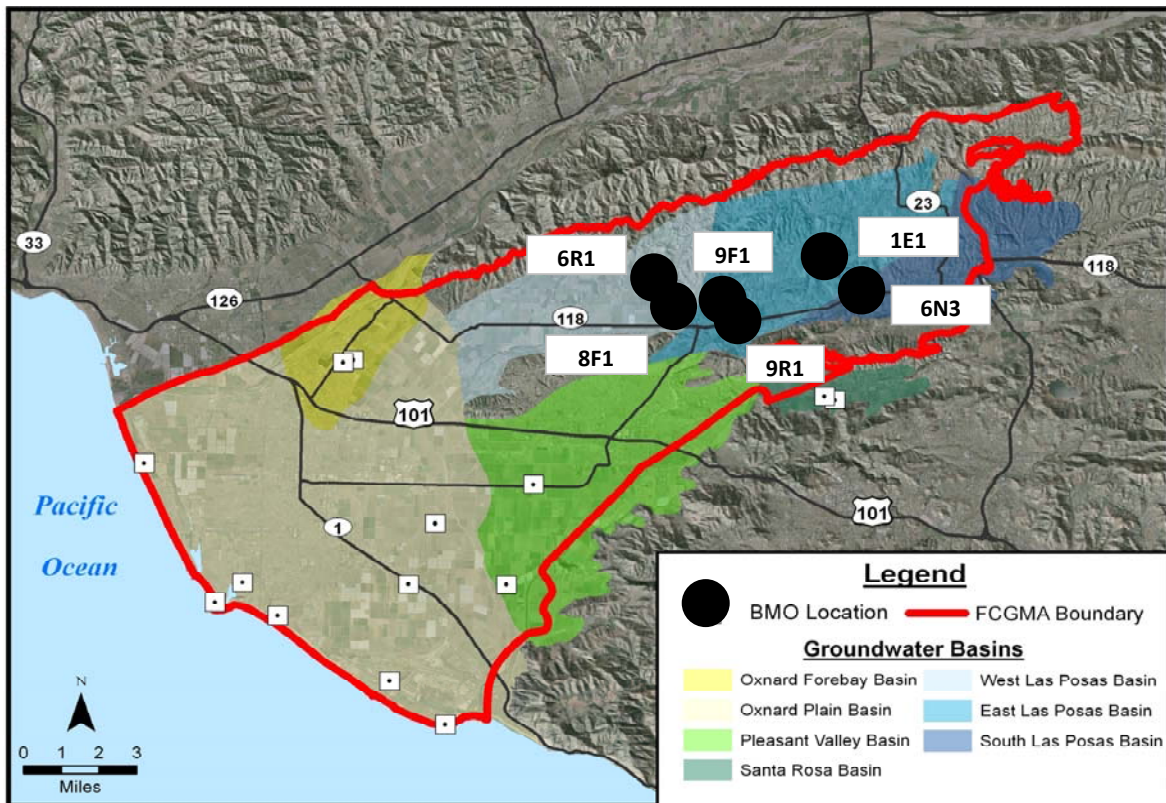
BMOs: Chloride Concentration: WLP & ELP: 100 mg/L; SLP: 160 mg/L.

TDS Concentration: ELP: 500 mg/L; WLP: 600 mg/L; and SLP: 1,500 mg/L.

Status Summary: In 2010, chloride and TDS exceeded the BMOs at two locations and was met at two. Two locations did not have data in 2010 and may need to be replaced. Chloride and TDS concentrations are stable at the BMO locations, with one location decreasing.

Status Summary Table

State Well Number (name)	Depth (ft)	Chloride (mg/L)		TDS (mg/L)		5-yr Trend	
		BMO	2010 Ave	BMO	2010 Ave	Chloride	TDS
02N20W09F01S (ELP)	906-1,290	100	170	500	1,400	→	→
02N20W09R01S (ELP)	456-724	100	190	500	1,410	→	→
02N20W01E01S (ELP)	567-907	100	No Data	500	No Data	No Data	
02N20W06R01S (WLP)	1,090-1,512	100	16	600	504	→	→
02N20W08F01S (WLP)	752-1,406	100	11	600	320	↓	↓
02N19W06N03S (SLP)	101-121	160	No Data	1500	No Data	No Data	



FOX CANYON GMA BASIN MANAGEMENT OBJECTIVES REPORT CARD
LAS POSAS BASINS
 Updated January 2011

